

# PRESS PACK

NOVELTIES CERSAIE 2021

[WWW.BELLACASACERAMICA.COM](http://WWW.BELLACASACERAMICA.COM)



BELLACASA





# BELLACASA

It's a time of change, of opening doors and sharing our homes with friends and loved ones.

The time to look at the future with excitement, of making new projects.

It's time for renovation -It's time for Bellacasa.

# GRESPANIA

COVERLAM | COVERLAM I TOP | BELLACASA

INNOVACIÓN - DISEÑO - CALIDAD - SERVICIO

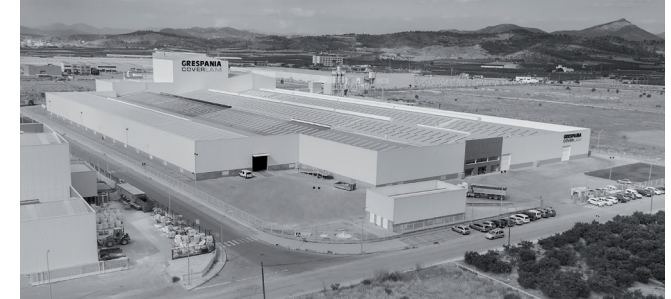
---



SPAIN - Nules



SPAIN - Castellón



SPAIN - Moncofar



ITALY



BENELUX



FRANCE



POLSKA



UNITED KINGDOM

GRESPANIA is an international company dedicated to the manufacturing and sale of innovative ceramic products with unbeatable properties in terms of quality and design. Ongoing investment, continual adoption of the latest advances in design and manufacturing and a paramount concern for the environment have all helped consolidate Grespania's global market leadership over the past 50 years and will ensure its future evolution in the ceramic sector.

The Grespania Group has 3 factories employing state-of-the-art technology and the most advanced processes for the production of porcelain floor tiles, white body wall tiles and thin, large-format laminate porcelain tiles in sizes up to 120x360 cm. In addition to its manufacturing and distribution centres in Spain, the company has subsidiaries in France, Italy, the Netherlands, Poland and the UK.

Thanks to this combination of advanced production centres with a solid network of subsidiaries, Grespania is able to provide quality products worldwide.



# DOMUS

PORCELAIN TILES

60x120 | 80x80 | 60x60 | 30x60

- The cement-like porcelain series, Domus, features a natural finish and is available in 60x120 cm, 80x80 cm, 60x60 cm and 30x60 cm formats, and in a neutral, elegant range of colours (white, gray, anthracite, lead, sand, taupe).

Available in anti-slip version for outdoor and wet areas.



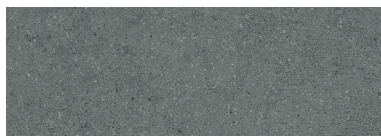
BLANCO



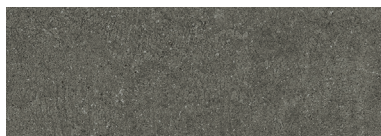
ARENA



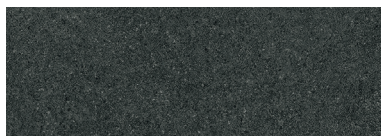
GRIS



POMO



TAUPE



ANTRACITA





30x90

➤ Throughout the years, marble has always been a luxurious, attractive material that offers multiple possibilities when it comes to combinations with other natural materials.

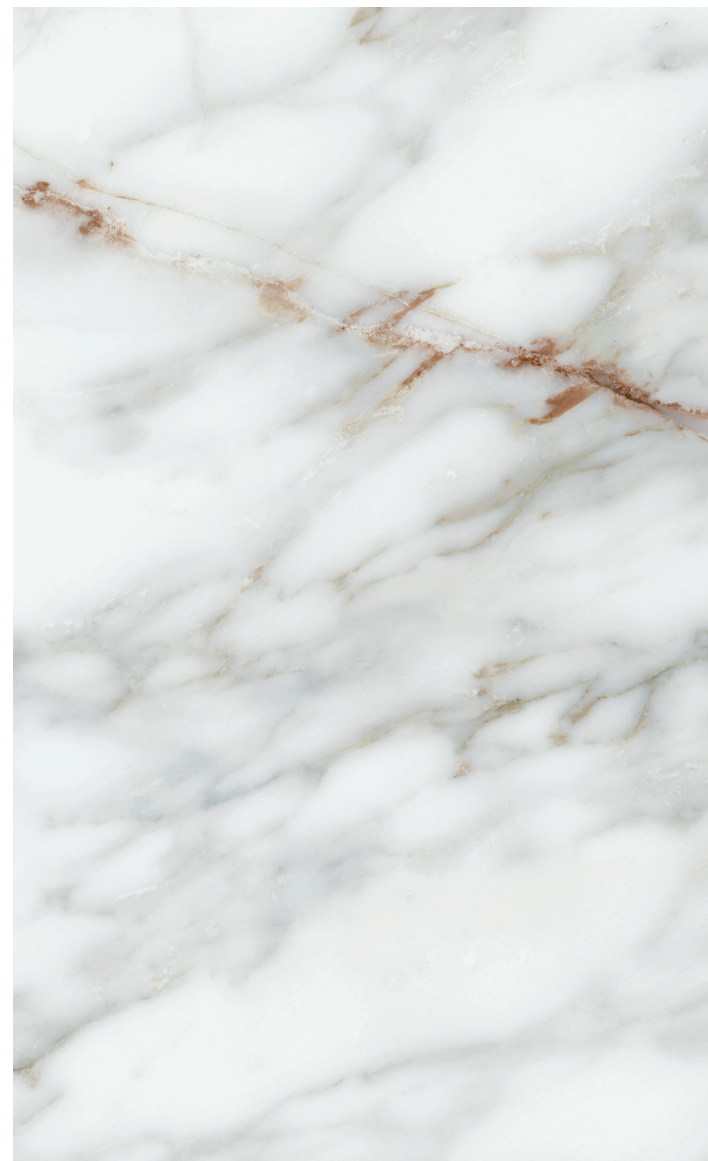
Nowadays, it is increasingly featured in the main interior design trends. We here at Bellacasa wanted to contribute to and encourage this timeless and elegant line of design by creating the Augusta collection.

This series is now available as a white body wall tile with Roma and Seúl in 30x90 cm format.

This series is complemented with decorative elements that make walls the centre of attention, producing truly creative canvases.



**Augusta Roma**



**Augusta Seúl**



# AUGUSTA

WALL TILES

30x90



# Roma



# AUGUSTA

WALL TILES

30x90



◀ Firenze



# AUGUSTA

WALL TILES

30x90



# Seúl





^ Pagoda

< Trastevere oro





BELLACASA

NOVEDADES CERSAIE 2021

CV-16 Ctra. Castellón-Alcora km 2,200 - P.O.Box 15712080 - Castellón - tel +34 964 34 44 11

[WWW.BELLACASACERAMICA.COM](http://WWW.BELLACASACERAMICA.COM)

---

Communication department: Vanesa Vaquer ([vvaquer@grespania.com](mailto:vvaquer@grespania.com)) / Lydia Bastán ([lbastan@grespania.com](mailto:lbastan@grespania.com))